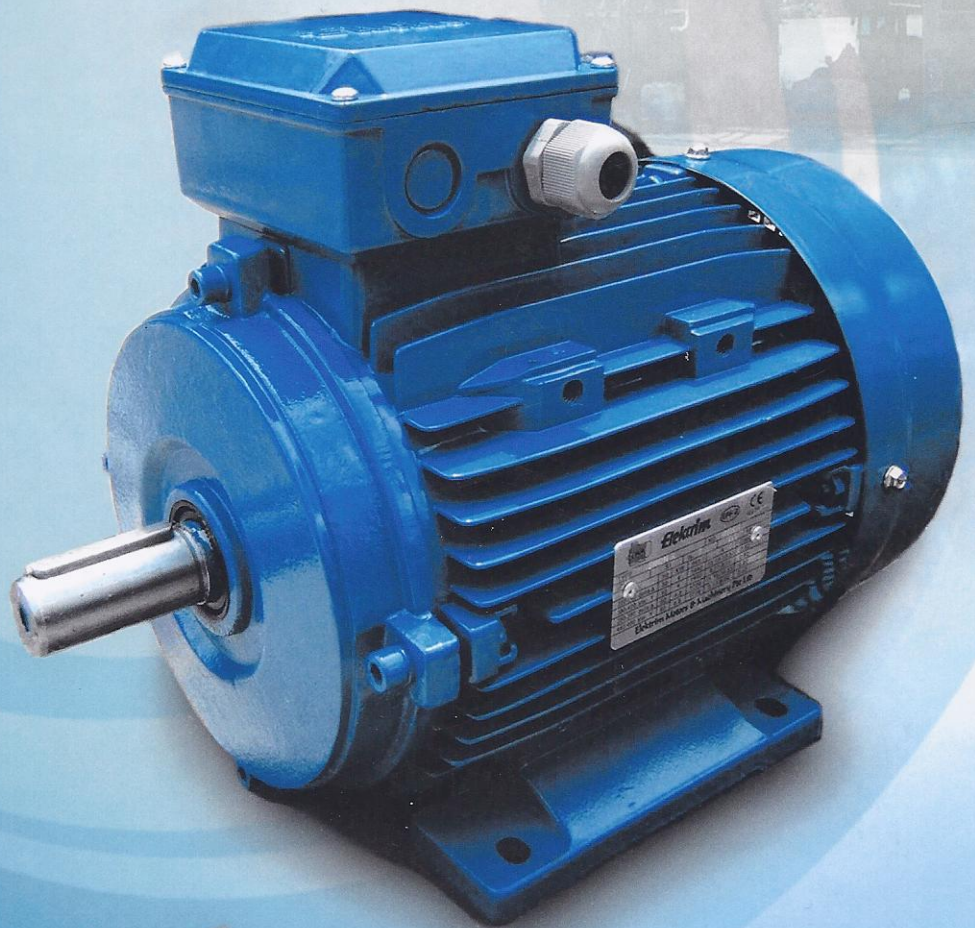




EMM 'H' SERIES ALUMINIUM MOTORS

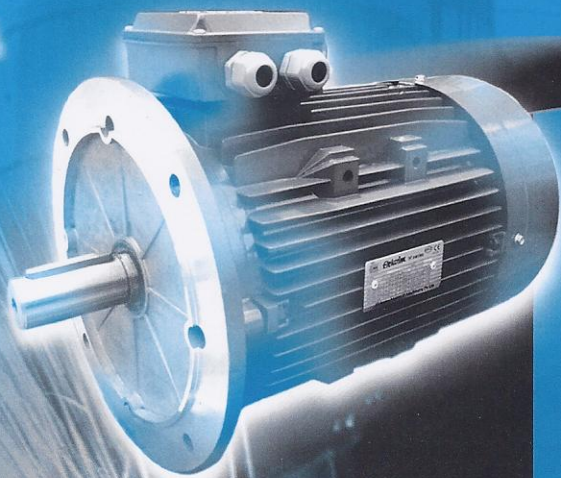
HIGH-EFFICIENCY (EFF2) A.C MOTORS

For the Fine Movement



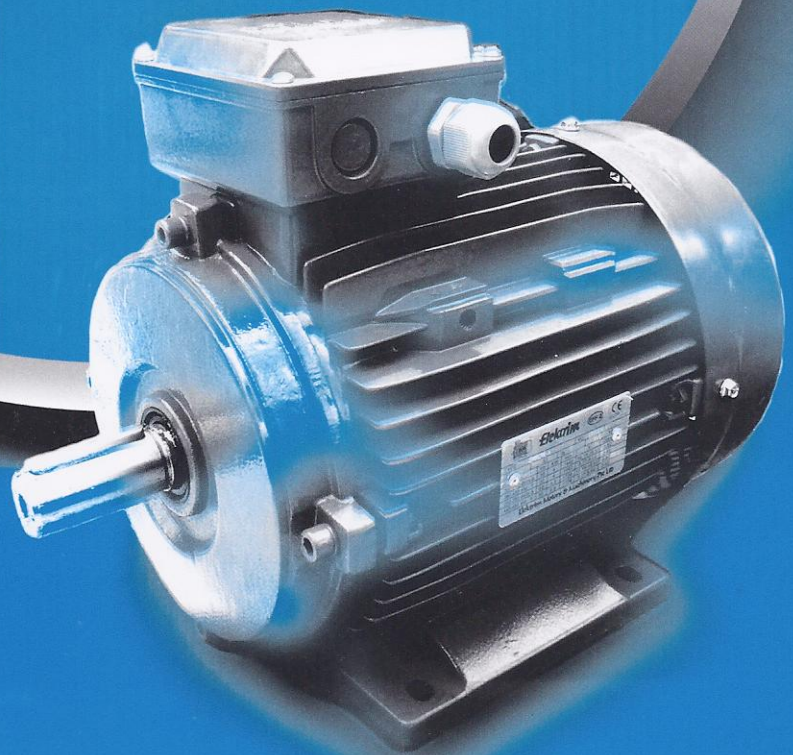
Elektrim Motors & Machinery Pte Ltd

EMM 'H' series aluminium motors are totally enclosed fan cooled, 3 phase, squirrel cage induction motors. The motors come with removable feet for universal mounting advantages and general purpose application.



EMM 'H' series aluminium motors are manufactured to High Efficiency (EFF2) and starting torque and are characterized by outstanding features such as : protection degree in IP55, insulation class F, low noise (test at load), optimized structure and artistic outline.

Its cooling method is IC411 and the rated output and mounting dimensions fully conformed to the standard IEC and DIN 42673. The EMM 'H' series aluminium motors are suitable for driving various kinds of machines or equipments without special requirements. They are rated at 400V, 50Hz, Y-connection for motors up to 3kw, Δ -connection for 4kw and above. The S1 duty operating condition is not more than 40°C ambient temperature and not exceeding 1,000 meters height above sea level.



PERFORMANCE DATA FOR 2 POLE 3000RPM

Model	Power (kW)	FLC			Speed (r.p.m.)	Eff (%)	Power factor	Tstart/Tn	Tmax/Tn	Ist/In	Net weight (kg)
		380V (A)	400V (A)	415V (A)							
EM56A-2	0.09	0.33	0.31	0.30	2800	62	0.68	2.3	2.4	6	4.6
EM56B-2	0.12	0.38	0.36	0.35	2800	67	0.71	2.3	2.4	6	4.8
EM63A-2	0.18	0.53	0.50	0.49	2800	69	0.75	2.2	2.4	6	5
EM63B-2	0.25	0.68	0.65	0.62	2800	72	0.78	2.2	2.4	6	5.3
EM71A-2	0.37	0.95	0.90	0.87	2800	73.5	0.80	2.2	2.4	6	6.5
EM71B-2	0.55	1.35	1.28	1.24	2800	75.5	0.82	2.2	2.4	6	7
EM80A-2	0.75	1.75	1.66	1.60	2800	76.5	0.85	2.2	2.4	6	9.5
EM80B-2	1.10	2.55	2.42	2.33	2800	77	0.85	2.2	2.4	6	11
EM90S-2	1.50	3.48	3.31	3.19	2800	77	0.85	2.2	2.4	6	14.5
EM90L-2	2.20	4.98	4.73	4.56	2800	78	0.86	2.2	2.4	6	17
EM100L-2	3.00	6.4	6.08	5.86	2870	82	0.87	2.2	2.3	7	24.5
EM112M-2	4.00	8.2	7.79	7.51	2890	85.5	0.87	2.2	2.3	7	30
EM132SA-2	5.50	11	10.45	10.07	2900	85.5	0.88	2.0	2.2	7	42
EM132SB-2	7.50	15	14.25	13.73	2900	86.2	0.88	2.0	2.2	7	50

PERFORMANCE DATA FOR 4 POLE 1500RPM

Model	Power (kW)	FLC			Speed (r.p.m.)	Eff (%)	Power factor	Tstart/Tn	Tmax/Tn	Ist/In	Net weight (kg)
		380V (A)	400V (A)	415V (A)							
EM56A-4	0.06	0.28	0.27	0.26	1400	56	0.58	2.3	2.4	6	4.6
EM56B-4	0.09	0.39	0.37	0.36	1400	58	0.61	2.3	2.4	6	4.8
EM63A-4	0.12	0.48	0.46	0.44	1400	60	0.63	2.2	2.4	6	4.8
EM63B-4	0.18	0.65	0.62	0.60	1400	64	0.66	2.2	2.4	6	5
EM71A-4	0.25	0.83	0.79	0.76	1400	67	0.68	2.2	2.4	6	6.3
EM71B-4	0.37	1.12	1.06	1.03	1400	69.5	0.72	2.2	2.4	6	7
EM80A-4	0.55	1.56	1.48	1.43	1400	73.5	0.73	2.2	2.4	6	9.5
EM80B-4	0.75	2.01	1.91	1.84	1400	75.5	0.75	2.2	2.4	6	11
EM90S-4	1.10	2.75	2.61	2.52	1400	78	0.78	2.2	2.4	6	14.5
EM90L-4	1.50	3.65	3.47	3.34	1400	79	0.79	2.2	2.4	6	16
EM100LA-4	2.20	5	4.75	4.58	1430	81	0.82	2.2	2.3	7	23
EM100LB-4	3.00	6.8	6.46	6.23	1430	82.5	0.81	2.2	2.3	7	27
EM112M-4	4.00	8.8	8.36	8.06	1440	84.5	0.82	2.2	2.3	7	33.5
EM132S-4	5.50	12	11.4	10.99	1440	85.5	0.84	2.2	2.2	7	49.5
EM132M-4	7.50	15	14.25	13.73	1440	87	0.85	2.2	2.2	7	57.5

PERFORMANCE DATA FOR 6 POLE 1000RPM

Model	Power (kW)	FLC			Speed (r.p.m.)	Eff (%)	Power factor	Tstart/Tn	Tmax/Tn	Ist/In	Net weight (kg)
		380V (A)	400V (A)	415V (A)							
EM90S-6	0.75	2.3	2.19	2.11	910	72.5	0.70	2.2	2.2	5.5	14.5
EM90L-6	1.10	3.2	3.04	2.93	910	73.5	0.72	2.2	2.2	5.5	17
EM100L-6	1.50	4	3.8	3.66	940	77.5	0.74	2.2	2.2	6	22.5
EM112M-6	2.20	5.6	5.32	5.13	940	80.5	0.74	2.2	2.2	6	29
EM132S-6	3.00	7.2	6.84	6.59	960	83	0.76	2.0	2.0	6.5	48
EM132MA-6	4.00	9.4	8.93	8.61	960	84	0.77	2.0	2.0	6.5	49
EM132MB-6	5.50	13	12.35	11.9	960	85.3	0.78	2.0	2.0	6.5	57.5

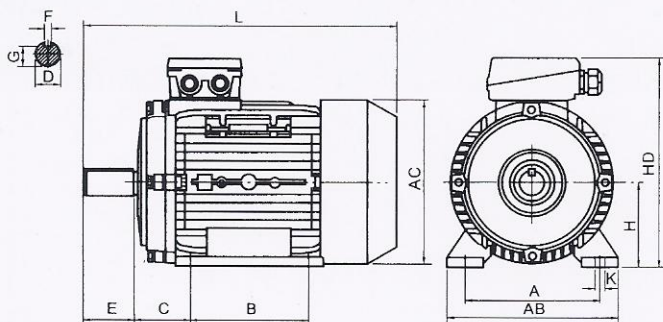
PERFORMANCE DATA FOR 8 POLE 750RPM

Model	Power (kW)	FLC			Speed (r.p.m.)	Eff (%)	Power factor	Tstart/Tn	Tmax/Tn	Ist/In	Net weight (kg)
		380V (A)	400V (A)	415V (A)							
EM132S-8	2.20	5.8	5.51	5.31	710	85.5	0.71	2.0	2.0	5.5	39
EM132M-8	3.00	7.7	7.32	7.05	710	82	0.72	2.0	2.0	5.5	45

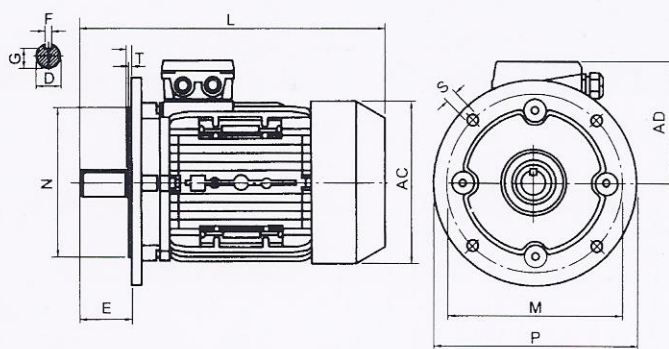
BEARING SIZE

Sizes	Drive Side Bearing	N-Drive Side Bearing
56	6201	6201
63	6201	6201
71	6202	6202
80	6204	6204
90	6205	6204
100	6206	6206
112	6306	6306
132	6308	6308
160	6309	6309

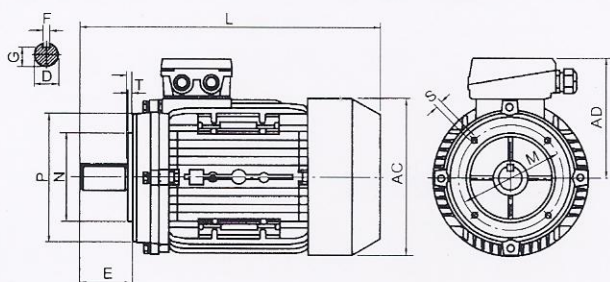
INSTALLATION DIMENSIONS



IM B3 : FOOT MOUNT



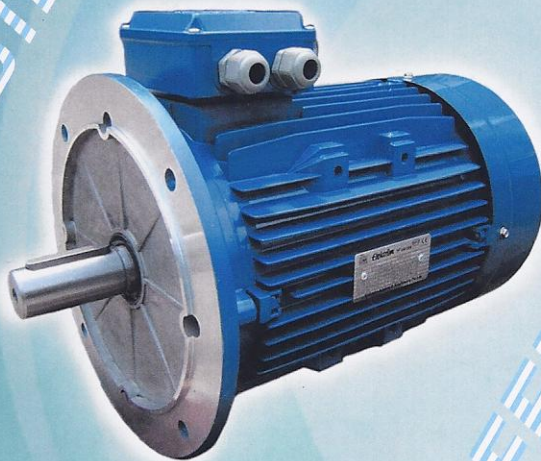
IM B5 : FOOT & FLANGE MOUNT



IM B14 : FLANGE MOUNT

Frame Size	Mounting Dimensions (mm)																			Frame Dimensions (mm)					
											IMB14					IMB5									
	A	B	C	D	E	F	G	H	K	M	N	P	S	T	M	N	P	S	T	AB	AC	AD	HD	L	
56	90	71	36	9	20	3	7.2	56	5.8	65	50	80	M5	2.5	98	80	120	7	3.0	110	120	110	155	195	
63	100	80	40	11	23	4	8.5	63	7	75	60	90	M5	2.5	115	95	140	10	3.0	130	130	115	165	230	
71	112	90	45	14	30	5	11	71	7	85	70	105	M6	2.5	130	110	160	10	3.5	145	145	125	185	255	
80	125	100	50	19	40	6	15.5	80	10	100	80	120	M6	3.0	165	130	200	12	3.5	160	165	135	215	295	
90S	140	100	56	24	50	8	20	90	10	115	95	140	M8	3.0	165	130	200	12	3.5	180	185	145	235	335	
90L	140	125	56	24	50	8	20	90	10	115	95	140	M8	3.0	165	130	200	12	3.5	180	185	145	235	360	
100L	160	140	63	28	60	8	24	100	12	130	110	160	M8	3.5	215	180	250	15	4.0	205	215	170	255	380	
112M	190	140	70	28	60	8	24	112	12	130	110	160	M8	3.5	215	180	250	15	4.0	245	240	180	285	400	
132S	216	140	89	38	80	10	33	132	12	165	130	200	M10	4.0	265	230	300	15	4.0	280	275	195	325	475	
132M	216	178	89	38	80	10	33	132	12	165	130	200	M10	4.0	265	230	300	15	4.0	280	275	195	325	515	

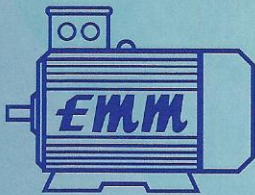
RELIABILITY



EFFICIENCY



PERFORMANCE



Elektrim Motors & Machinery Pte Ltd

80 Joo Koon Circle, Singapore 629100

Tel 6863 9500
Fax 6863 3778
Email sales@emm-motors.com
GST Reg. No. M2-0066520-1
Website www.emm-motors.com

Elektrim Motors & Machinery Sdn Bhd

No. 23, Jalan Bulan U5/8, Seksyen U5, Bandar Pinggiran Subang,
40150 Shah Alam, Selangor Darul Ehsan, Malaysia

Tel 603-7847 6635 / 7847 6629 / 7847 6919
Fax 603-7847 1017
Email elektrim@tm.net.my
Co. No. 511496-M